



**THE CHICAGO
INSTITUTE
FOR
PSYCHOANALYSIS**

and

**THE SPERTUS
INSTITUTE OF
JEWISH STUDIES**

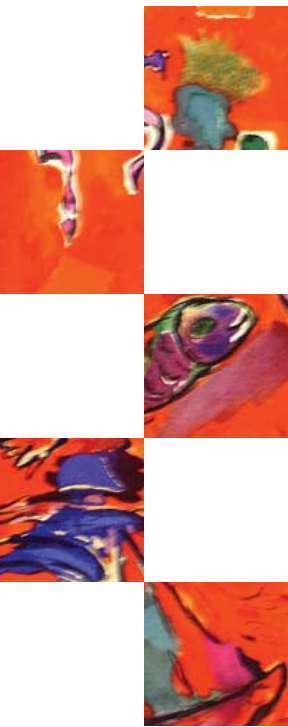
present



**Judaism and
Psychoanalysis:
A Continuing
Dialogue**



An All Day Conference
Sunday, October 5, 2008
The Spertus Institute of Jewish Studies
610 South Michigan Avenue
Downtown Chicago



FOR MORE THAN 100 YEARS, Psychoanalysis and Judaism have shared a mutually stimulating and, at times, contentious relationship. This conference will look at both the Jewish influence on psychoanalysis and the psychoanalytic interpretation of Judaism. Psychoanalysis was a product of late-nineteenth-century Jewish Vienna. Sigmund Freud strongly identified as a Jew yet felt ambivalent about his Jewishness and feared that psychoanalysis would be considered a “Jewish science.” As part of his attempt to analyze what mattered most to him about the world around him, he looked at Judaism through his psychoanalytic lens. Later psychoanalysts have followed his lead, and the most prominent of such thinkers today is Robert A. Paul, professor at Emory University and a featured speaker at this conference. The other expert commentators who will share their perspectives are: Jonathan Lear, University of Chicago professor and author of a masterful book on Freud; Ingrid Scholtz-Strasser, historian and Director of the Freud Museum in Vienna; Arnold Richards, the former editor of the leading psychoanalytic journal and a scholar who has concentrated on the topic of Freud’s Jewishness; Celia Brickman, author of a book on race and primitivity in psychoanalysis; Neal Spira and Arnold Tobin, two Chicago psychoanalysts with a particular interest in Judaism; and Marvin Zonis, University of Chicago professor emeritus, author, and frequent television commentator on the Middle East.

EDUCATIONAL OBJECTIVES

Participants will:

- Gain an understanding of the impact of Jewish culture in late 19th-century Vienna on Freud’s development of psychoanalysis
- Develop insights into Freud’s ambivalent relationship to his Jewishness, a relationship based on both his firm identity as a Jew and his concerns that psychoanalysis would be dismissed as a “Jewish science”
- Become clear about the shape and force of Freud’s critique of Judaism as an “illusion”
- Realize ways in which psychoanalytic engagement and religious belief might productively coexist
- Appreciate from a psychoanalytic perspective how Judaism and 20th-century Jewish experience help account for the nature of Israel and its current politics
- Become familiar with the basic mythic structure of the Torah narrative, and learn how this symbolic structure operates to put in motion a psychodynamic organization that leads to the “conscientious personality” that characterizes normative Judaism
- Gain insight into psychoanalytic perspectives on Jewish rituals and practices
- See how psychoanalytic ideas provide a bridge from collective ritual to personal memory

PLANNING COMMITTEE

James W. Anderson, Ph.D.,
Chair

Bertram Cohler, Ph.D.

Joan Dutton

Arnold Goldberg, M.D.

Hal M. Lewis, Ph.D.

Eva F. Lichtenberg, Ph.D.

Christine Kieffer, Ph.D.

Martin Laub, Ph.D.

Leslie Shaw, M.B.A., Ph.D.

Christine Susman

David Terman, M.D.

Jerome Winer, M.D.



The Chicago Institute for Psychoanalysis wishes to thank the following benefactors for their help in underwriting this event. Without their generous support, this conference would not be possible.

*Drs. Eva F. Lichtenberg and Arnold Tobin
Mr. Seymour Persky
The Government of Austria*

PROGRAM

Morning Sessions: The Influence of Judaism on Psychoanalysis

Eva F. Lichtenberg, Ph.D. – Chair

- 8:30 Registration and Continental Breakfast
- 9:00 Welcome — Hal M. Lewis, Ph.D.
Introduction to the Conference – David M. Terman, M.D.
- 9:15 Ingrid Scholtz-Strasser, M.A. — *Freud’s Intellectual Development within the Framework of “Jewish” Vienna*
- 10:00 Arnold Richards, M.D. — *Sigmund Freud’s Jewish Identity*
- 10:45 Break
- 11:00 Jonathan Lear, Ph.D. — *The Illusion of a Future: How Does Freud’s Critique of Religious Belief Actually Work?*
- 11:45 Morning discussant: Arnold Tobin, M.D.
- 12:00 Lunch — Marvin Zonis, Ph.D.
Judaism and Psychoanalytic Perspectives on Israel

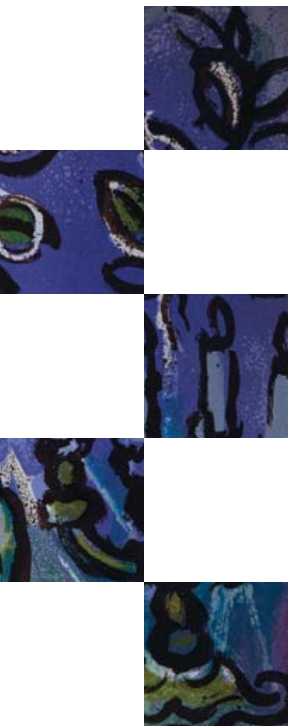
Afternoon Sessions: Psychoanalytic Perspectives on Judaism

James W. Anderson, Ph.D. – Chair

- 1:30 Robert A. Paul, Ph.D. — *Constructing the Conscientious Personality: How the Torah Works to Produce Jews*
- 2:15 Celia Brickman, Ph.D. — *Psychoanalytic Perspectives on Jewish Religious Thought*
- 3:00 Break
- 3:15 Neal Spira, M.D. — *Remembering, Repeating, and Repentance*
- 4:00 Afternoon discussant: Jonathan Lear, Ph.D.
- 4:15 Adjourn

TARGET AUDIENCE

This conference is intended for both professionals and the educated lay public interested in the ongoing dialogue between Judaism and psychoanalysis.



CONFERENCE FACULTY

Celia Brickman, Ph.D. is a faculty member and staff member at the Center for Religion & Psychotherapy of Chicago, where she is also co-director of the Education Program. She is the author of *Aboriginal Populations in the Mind: Race and Primitivity in Psychoanalysis*.

Jonathan Lear, Ph.D., a member of the faculty at the Chicago Institute for Psychoanalysis, is John U. Nef Distinguished Service Professor in the Committee on Social Thought and the Department of Philosophy of the University of Chicago. His books include *Freud* (a volume in the Routledge Philosophers series) and *Radical Hope: Ethics in the Face of Cultural Devastation*.

Robert A. Paul, Ph.D. is a faculty member at the Emory University Psychoanalytic Institute and founder of the university's Psychoanalytic Studies Program. Professor of Anthropology and Interdisciplinary Studies and Dean of the Graduate School of Arts and Sciences at Emory University, he wrote *Moses and Civilization: The Meaning Behind Freud's Myth*.

Arnold Richards, M.D. is a faculty member at the New York Psychoanalytic Institute; Assistant Professor of Psychiatry, New York University School of Medicine; and former Editor of the *Journal of the American Psychoanalytic Association*. A prolific author, his papers include "The Future of Psychoanalysis: The Past, Present and Future of Psychoanalytic Theory" (*Psychoanalytic Quarterly*, 1990).

Ingrid Scholtz-Strasser, M.A. is a historian with a special interest in late-nineteenth-century Austria. She is Chairwoman of the Sigmund Freud Foundation and Director of the Sigmund Freud Museum in Vienna.

Neal Spira, M.D. is a faculty member at the Chicago Institute for Psychoanalysis and in the Department of Psychiatry and Behavioral Sciences at Northwestern University. Medical Director of the Beacon Therapeutic School in Chicago, he is the author of "Psychoanalysis and the Disavowed Religious Impulse" (*Annual of Psychoanalysis*, 2006-2007).

Arnold Tobin, M.D. is a member of the faculty at the Chicago Institute for Psychoanalysis. A speaker, writer, and researcher, he has a long-standing interest in the connection between psychoanalysis and Jewish thought.

Marvin Zonis, Ph.D., a research graduate of the Chicago Institute for Psychoanalysis, is Professor Emeritus at the University of Chicago Graduate School of Business and former Professor of Human Development and Middle Eastern Studies at the University of Chicago. His books include *The Kimchi Matters: Global Business and Local Realities in a Crisis-Driven World* and *Majestic Failure: The Fall of the Shah*.

REGISTRATION FORM

Registration for the conference is \$125.00 and includes lunch. If you need to cancel your registration, a refund minus \$10.00 will be allowed if requested by September 26, 2008.

SEND COMPLETED FORM TO:

The Chicago Institute for Psychoanalysis
Attention: Christine Susman
122 South Michigan Avenue, Suite 1314
Chicago, IL 60603
Tel: (312) 922-7474
Fax: (312) 922-5656
Website: www.chicagoanalysis.org

Note: Seating is limited so early registration is strongly encouraged.

Checks should be made payable to the Institute for Psychoanalysis.

Check enclosed for \$ _____

Or please charge my:

Visa MasterCard

Card # _____

Expiration Date _____

Signature _____

Name _____

Address _____

City _____ State _____ Zip _____

Daytime Phone _____

Email Address _____

Profession _____

ACCREDITATION

Physicians: This activity has been planned and implemented in accordance with the Essential Areas and Policies of the Accreditation Council for Continuing Medical Education (ACCME) through the joint sponsorship of the American Psychoanalytic Association and the Chicago Institute for Psychoanalysis. The American Psychoanalytic Association is accredited by the ACCME to provide continuing medical education for physicians and takes responsibility for the content, quality and scientific integrity of this CME activity. The American Psychoanalytic Association designates each educational activity for a maximum of 7 hours in category 1 credit toward the Physicians Recognition Award. Each physician should claim only those hours of credit that he or she actually spent in the educational activity.

Psychologists: The Institute for Psychoanalysis of Chicago is approved by the American Psychological Association to offer continuing education for psychologists. The Institute for Psychoanalysis maintains responsibility for this program.

Social Workers: The Institute for Psychoanalysis of Chicago is approved as a continuing education sponsor for social workers by the Department of Professional Regulation of the State of Illinois. The Institute designates each continuing education activity as earning a maximum of 7 hours Continuing Education for Social Workers.

Professional Counselors: The Institute for Psychoanalysis of Chicago is approved as a continuing education sponsor for Professional Counselors and Clinical Professional Counselors by the Department of Professional Regulation of the State of Illinois. The Institute designates each continuing education activity as earning a maximum of 7 hours Continuing Education credit.

**THE CHICAGO INSTITUTE
FOR PSYCHOANALYSIS**

122 South Michigan Avenue
Suite 1300
Chicago, IL 60603

